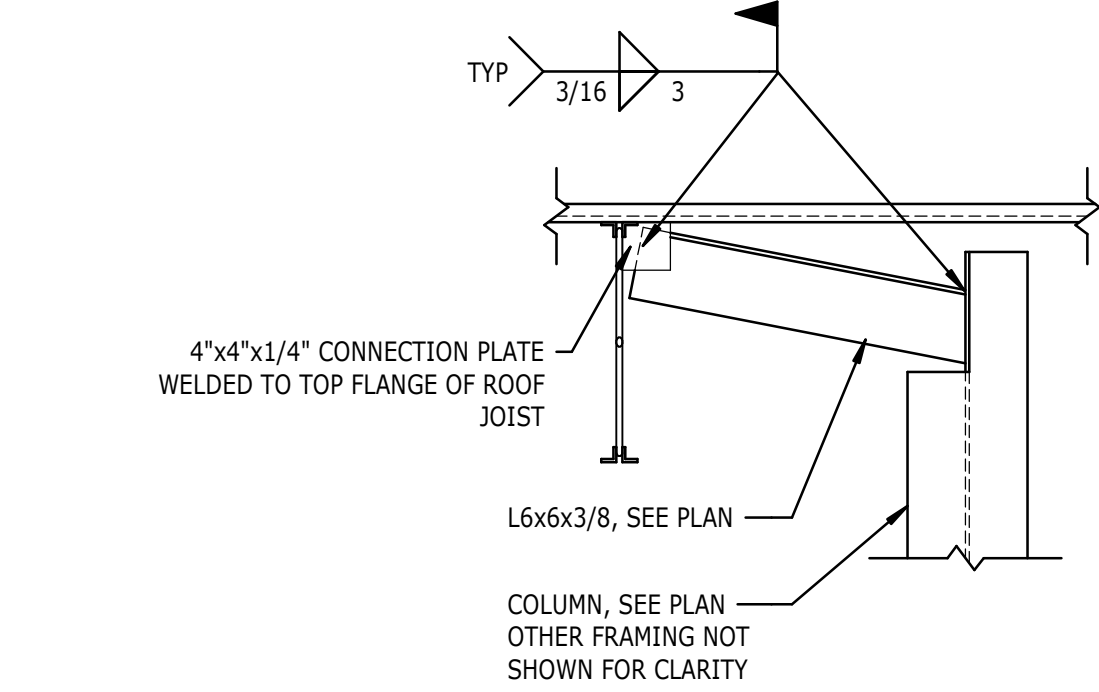
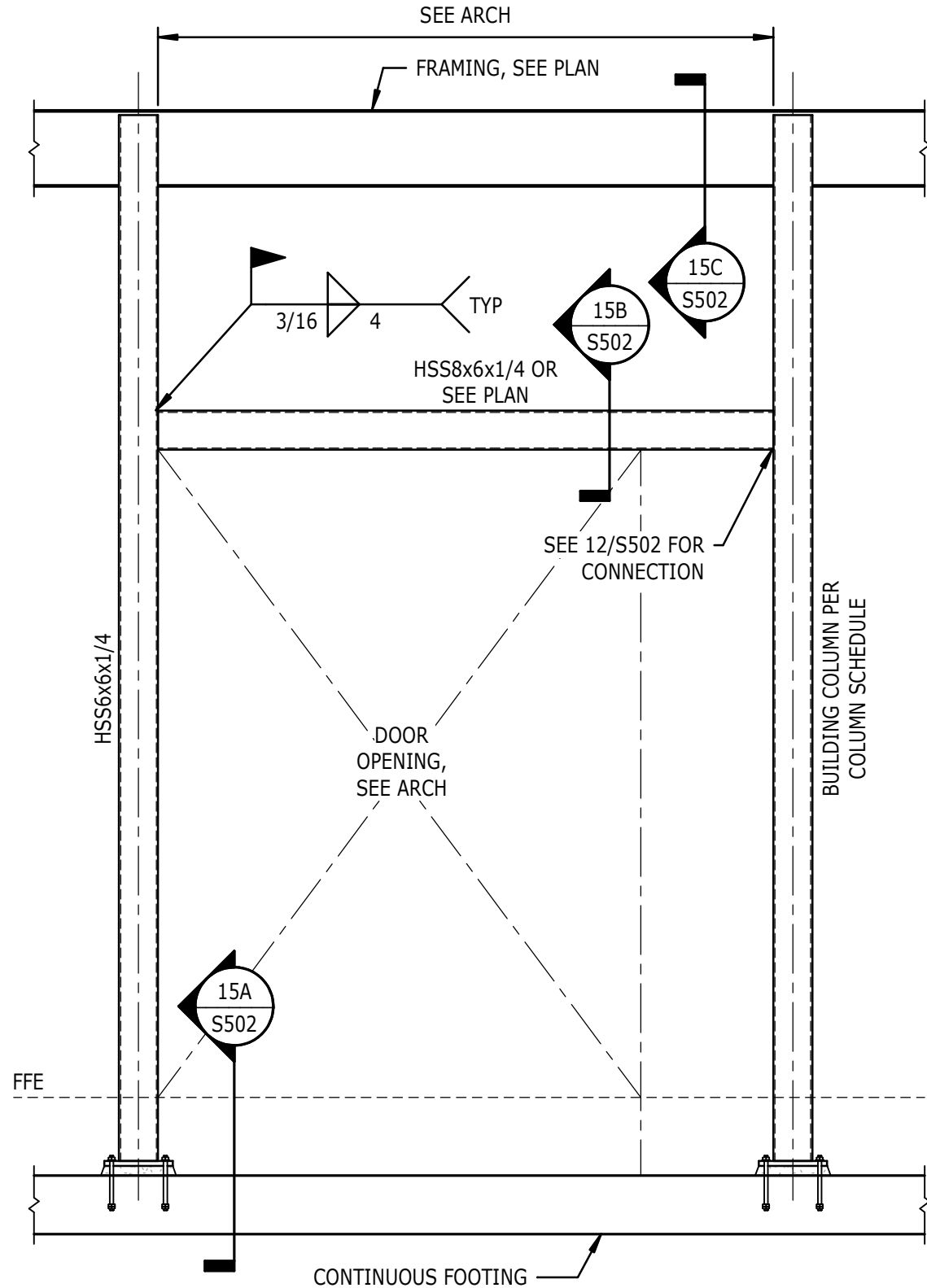


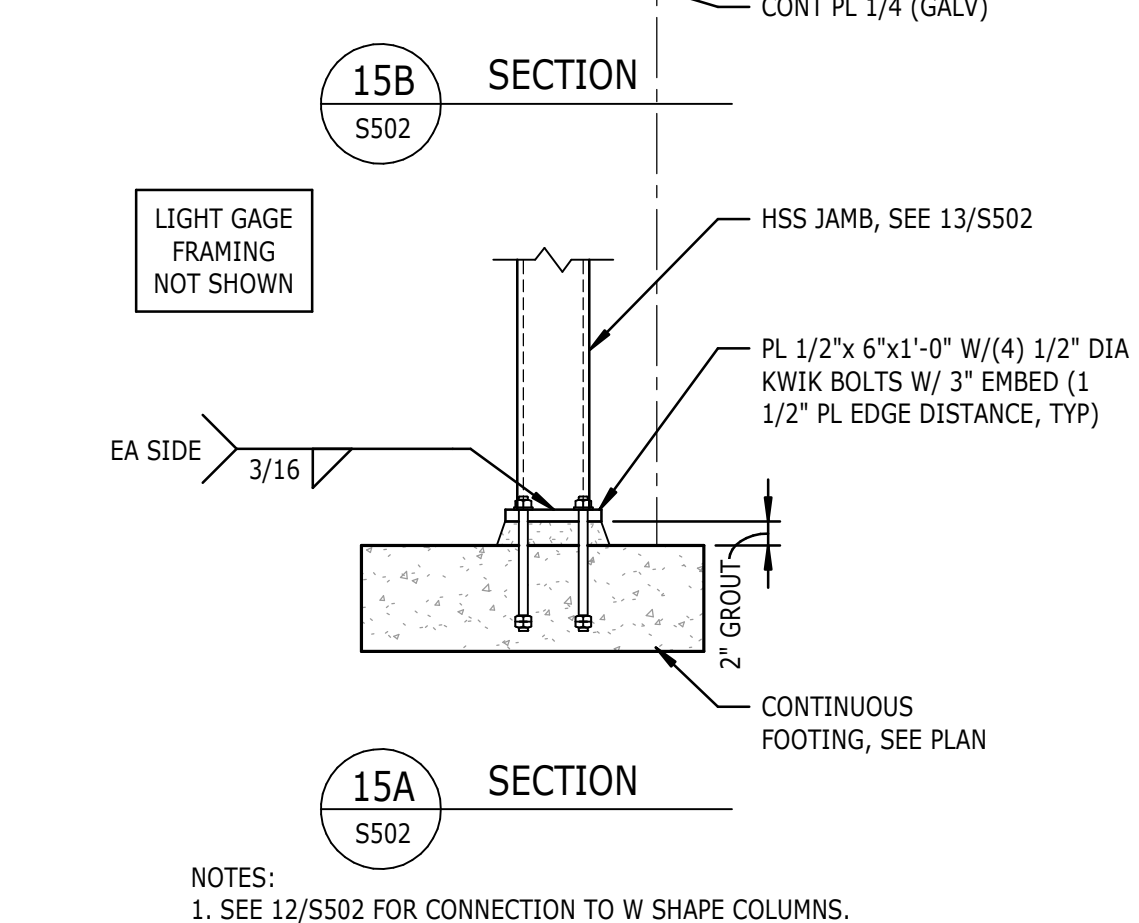
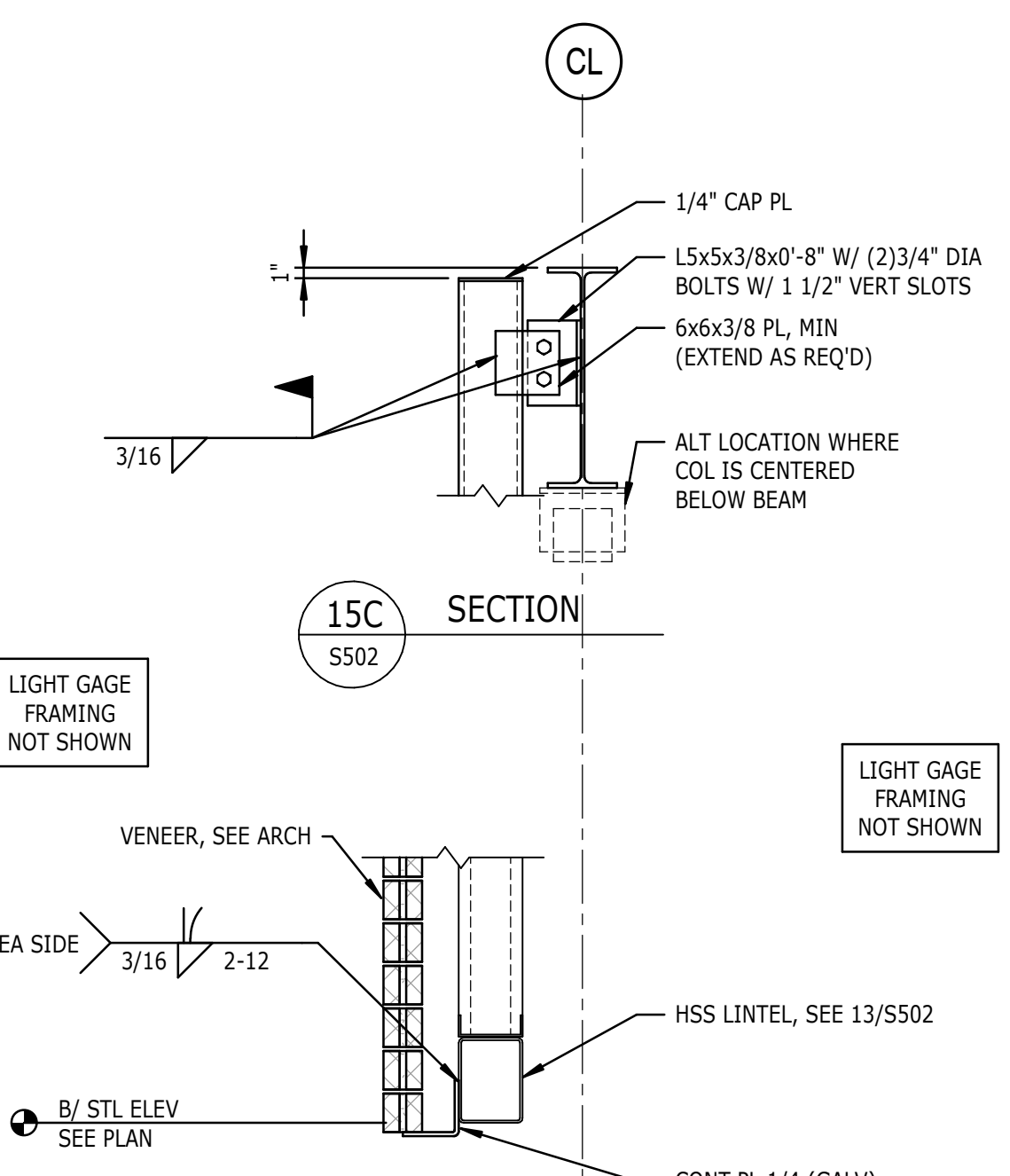
**17**  
S502  
TYPICAL COLUMN BEARING ON BEAM  
1 1/2" = 1'-0"



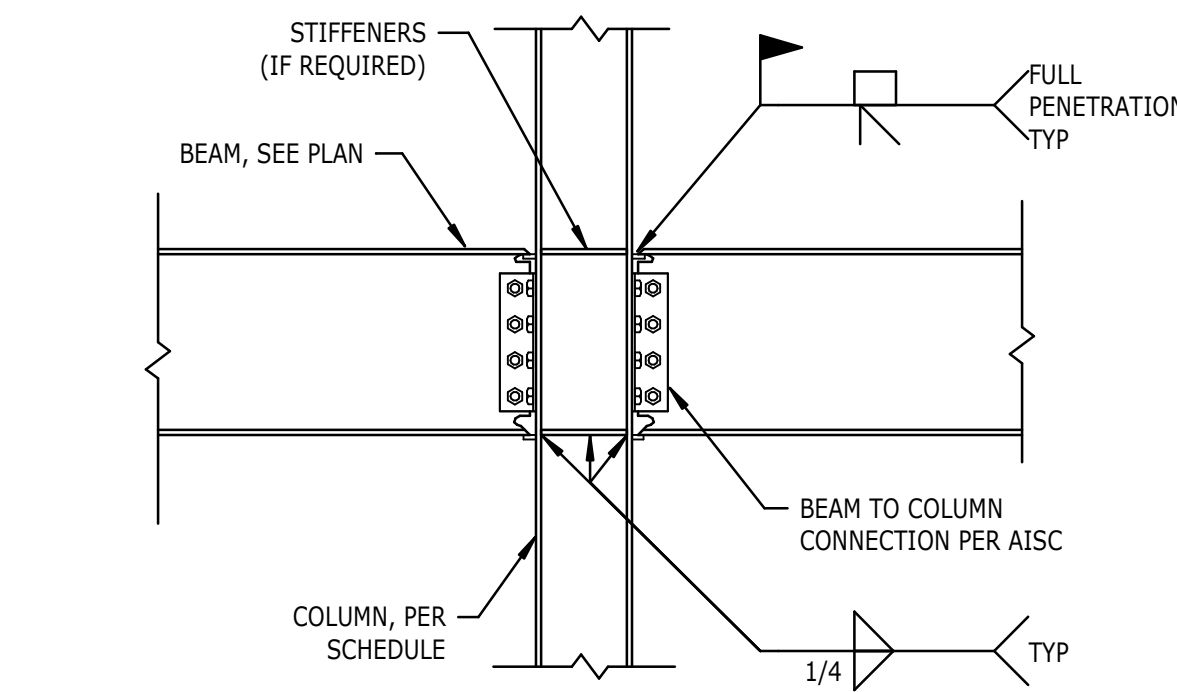
**18**  
S502  
DETAIL  
3/4" = 1'-0"



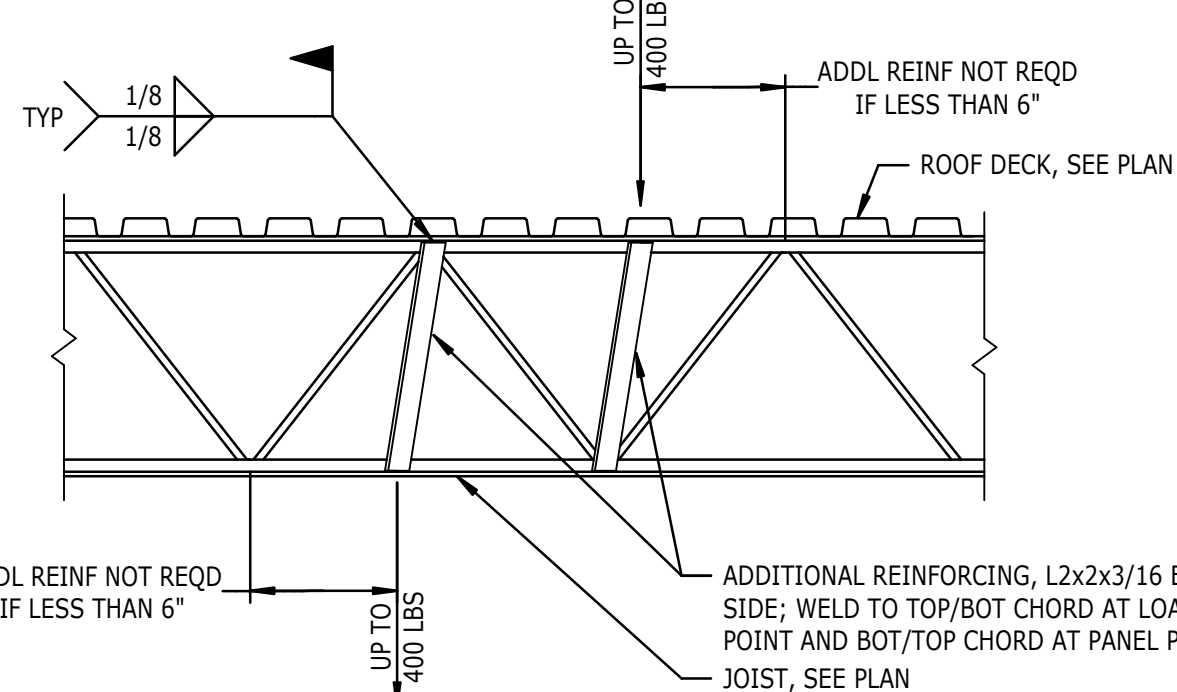
**13**  
S502  
TYPICAL STEEL HEADER AND POST  
3/8" = 1'-0"



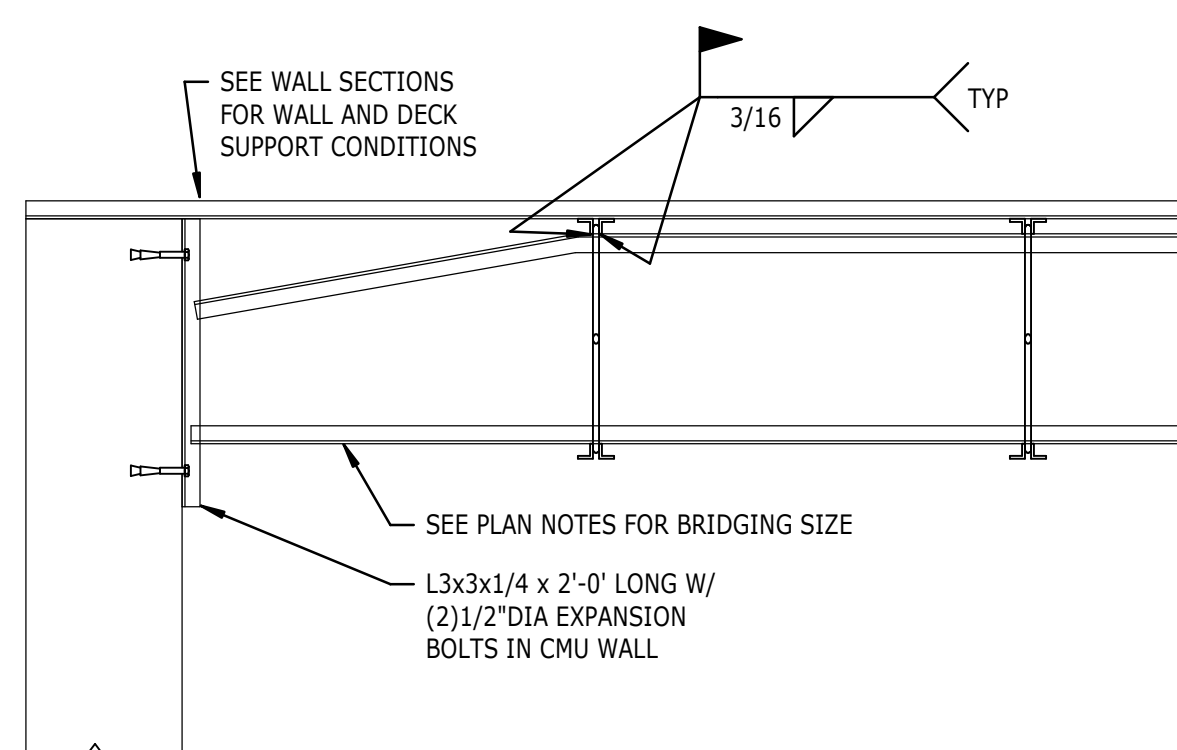
**15**  
S502  
TYPICAL STEEL POST CONNECTION DETAILS  
3/4" = 1'-0"



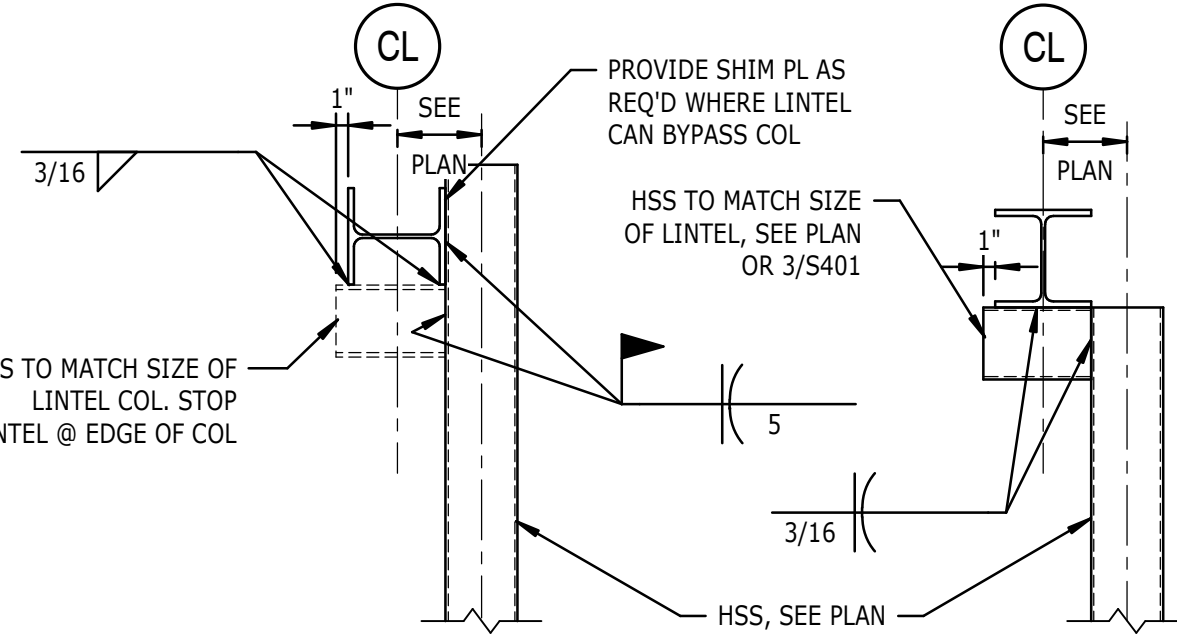
**9**  
S502  
DETAIL  
MOMENT CONNECTION  
3/4" = 1'-0"



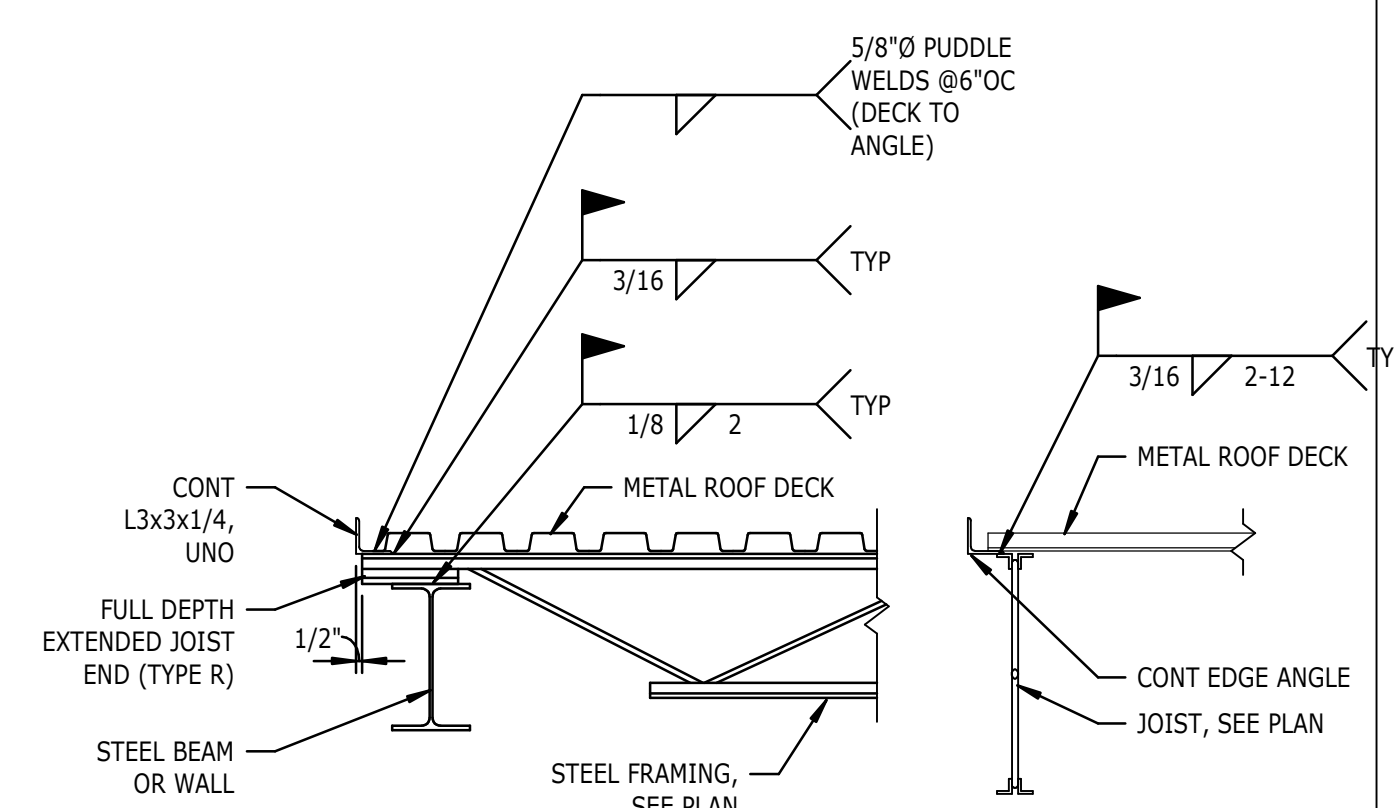
**10**  
S502  
TYPICAL JOIST REINFORCING AT POINT LOADS  
3/4" = 1'-0"



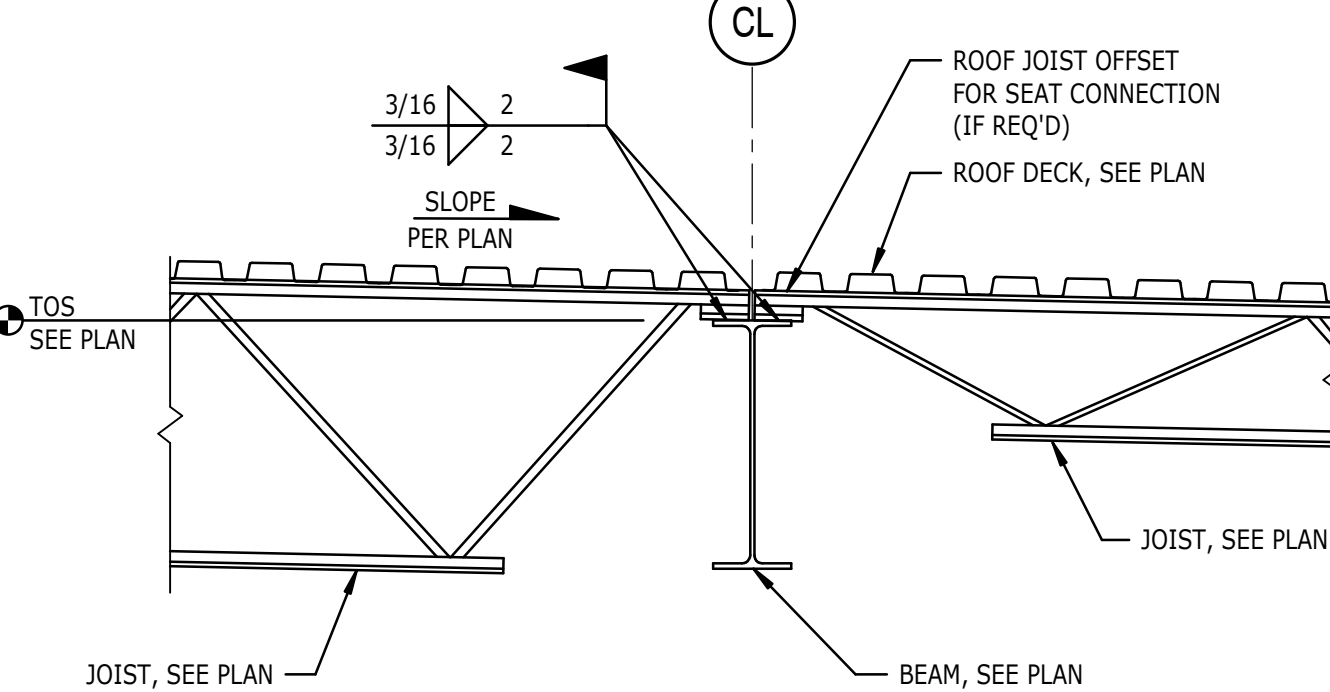
**11**  
S502  
TYPICAL JOIST BRIDGING DETAIL  
3/4" = 1'-0"



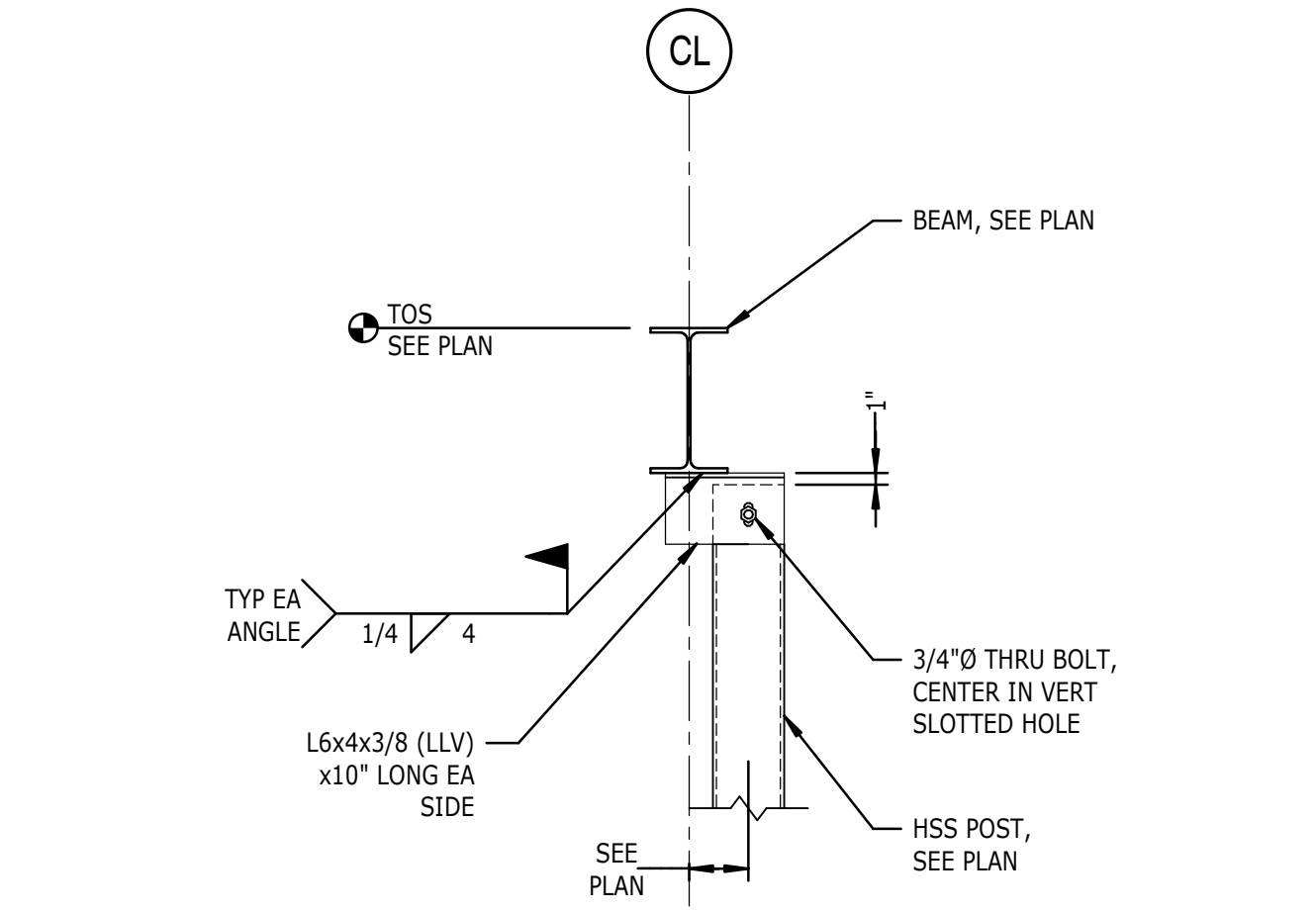
**12**  
S502  
TYPICAL STEEL HEADER CONNECTION DETAILS  
3/4" = 1'-0"



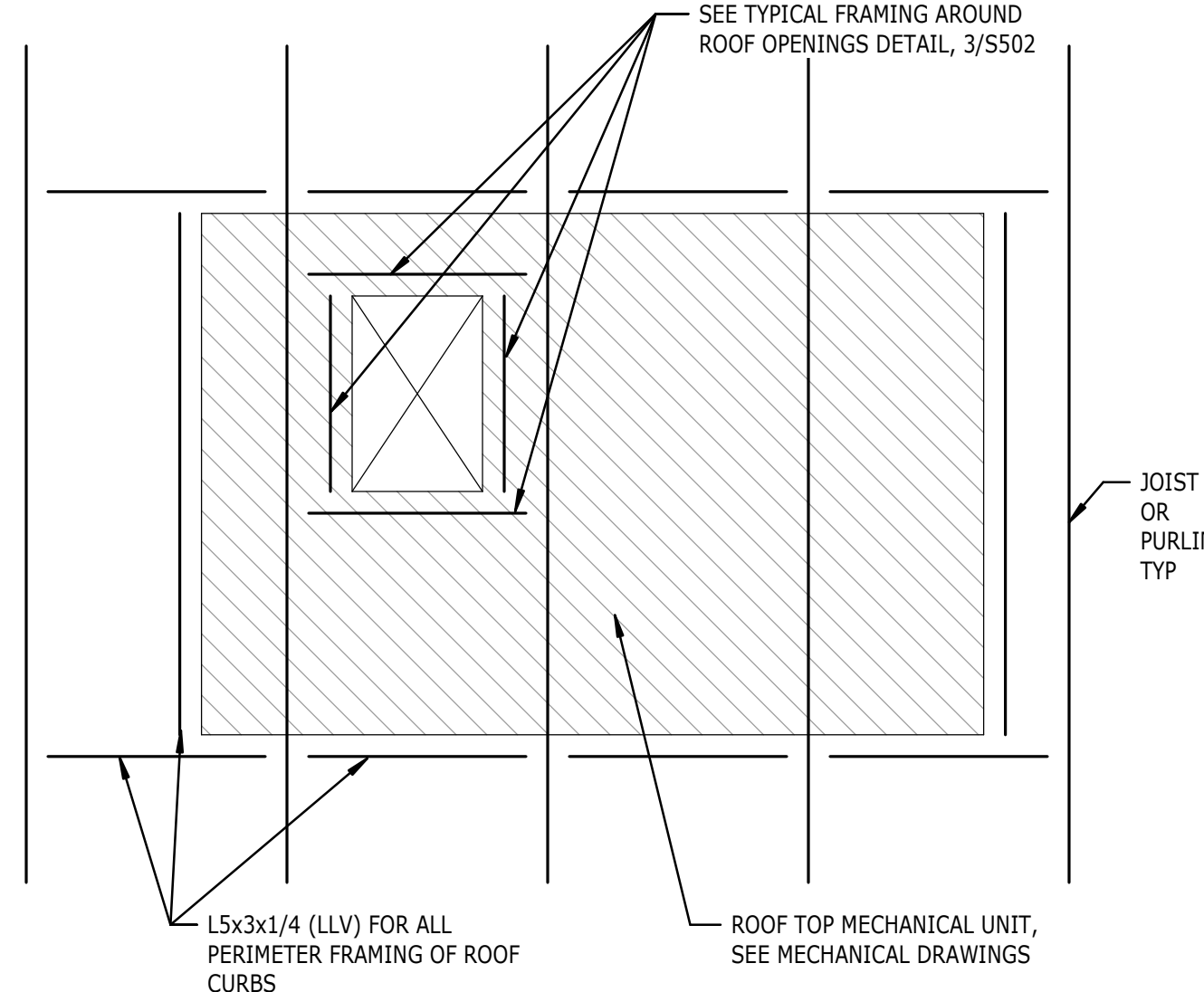
**5**  
S502  
TYPICAL EDGE OF DECK  
3/4" = 1'-0"



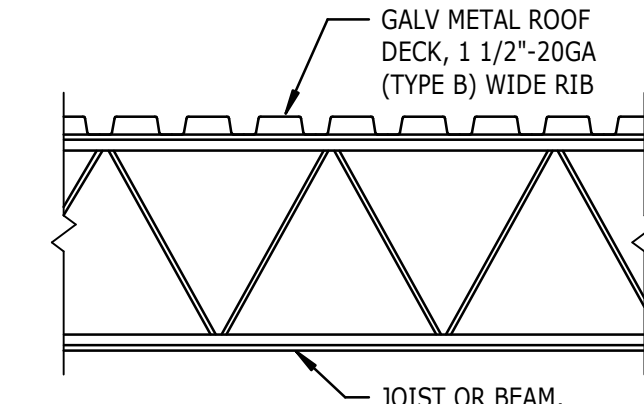
**6**  
S502  
TYPICAL JOIST BEARING AT STEEL BEAM  
3/4" = 1'-0"



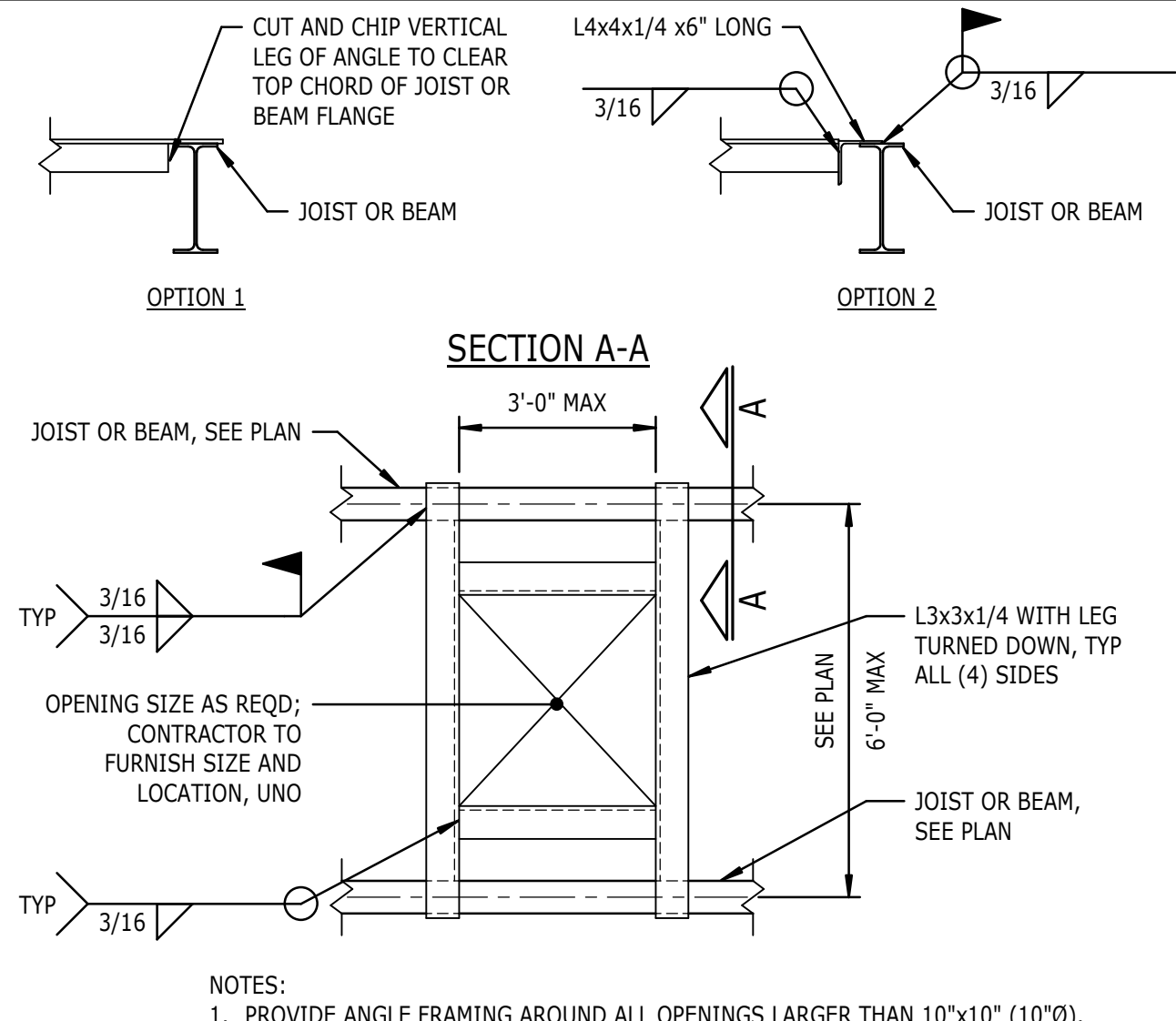
**7**  
S502  
TYPICAL STEEL POST SLIP CONNECTION  
3/4" = 1'-0"



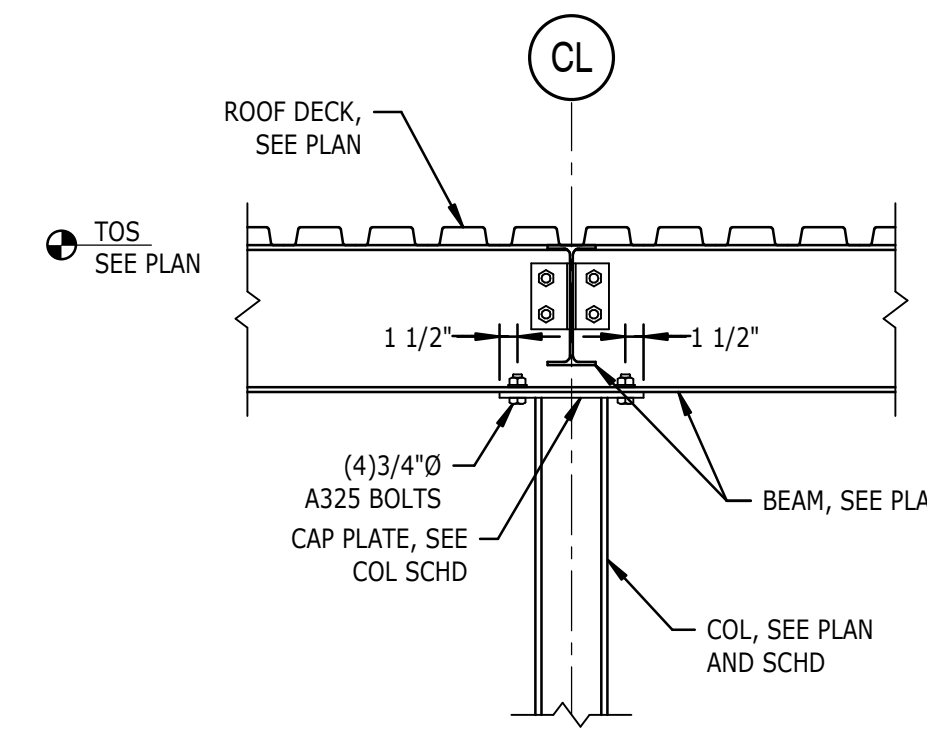
**8**  
S502  
TYPICAL MECHANICAL RTU FRAMING  
3/4" = 1'-0"



**1**  
S502  
TYPICAL 1 1/2" ROOF CONSTRUCTION  
3/4" = 1'-0"



**3**  
S502  
TYPICAL FRAMING AT 1 1/2" DECK OPENINGS  
3/4" = 1'-0"



**4**  
S502  
TYPICAL BEAM CANTILEVERED OVER COLUMN  
3/4" = 1'-0"